

VIDYA BHAWAN BALIKA VIDYA PITH

LAKHISARAI : 2021

CLASS = 4th A AND B

DATE= 22/06/20

SUBJECT= E V S

SUB: TEC: NAINA PASWAN

CHAPTER 2. TEETH

Dear students ,
The explanation of topic we will
continue today is :

PARTS OF TOOTH :

A tooth has two parts : **crown**
and root the part of the teeth
that we are able to see is the
ground the part of the teeth
inside the gum that we are not
able to see is the **root** . A tooth

has three main layers in
enamel dentine and pulp .

1. PULP :

The centre of the tooth is called the **pulp** . the lies inside the dentine . This is soft and consists of blood vessels and nerves .

These nerves and send signals to our brain and help us to sense touch , pain , heat and cold .

Blood vessels are hollow tubes through which blood flows.

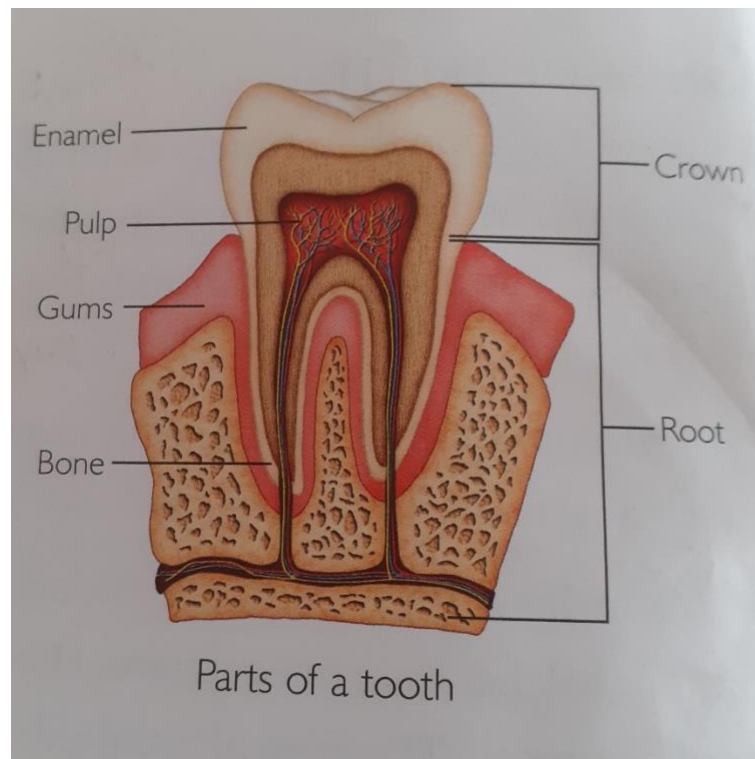
2. Dentine :

Dentine lies under the enamel and forms the main part of the teeth. It is not as hard as the enamel .

3 .Enamel :

Enamel is the outermost covering of the teeth it is the

hardest material in the human body it protects the inner part of the tooth .



TO BE CONTINOUE.....

- IN H.W LEARN AND WRITE .**